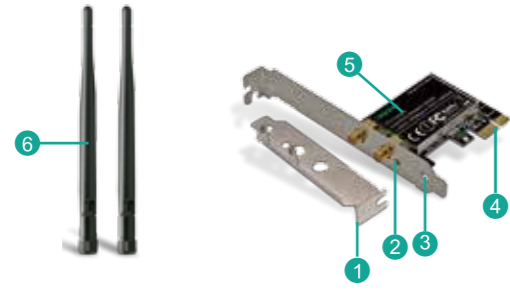




PCI Express 600Mbps Dual Band Wireless Adapter

Model : PCIE-N600

PCIE-N600 PCI Express 600Mbps Dual Band Wireless Adapter



- 1 Low profile bracket
- 2 Activity Indicator
- 3 Standard profile bracket
- 4 PCI express interface
- 5 Heat sink
- 6 2X3 dBi Wi-Fi Antenna

1

Product Description:

Linktek PCIE-N600 selected by Qualcomm Atheros 5BXXX solution, supports high-speed Wi-Fi connectivity and enriched media experiences for virtually all connected devices. It allow PCs get 300Mbps max throughput at 2.4GHz or 5GHz for Online Gaming ,HD Video Streaming, Video Calls and more. WLAN coexistence allows for superior rate-over-range throughput and low-latency performance in Windows operating SYSTEM. PCIE slot on board connection to make sure PC get stable and high performance network reception. Attached Full size bracket and half size bracket for standard and Mini size PCs.

Product Features:

Wi-Fi Standards: 802.11n--802.11a/b/g--802.11ac compatible
 Wi-Fi Spectral Bands: 2.4 GHz/5 GHz
 Peak speed: 300Mbps 2.4GHz/300Mbps 5GHz
 Channel Utilization: 20/40/80 MHz
 MIMO Configuration: 2x2 (2-stream)
 Wi-Fi Features: MU-MIMO
 Supported Interfaces: PCIe 2.X/1.X/3.X--X1/X4/X8/X16 Slot
 Bracket : Full height and Half height Bracket

2

Package List:

- 1X PCIE-N600
- 1X Low Profile Bracket
- 1X Mini CD Driver
- 1X User Manual
- 1X Screw

System and Hardware Requirements:

Windows10(32/64bit),Windows8.1(32/64bit),Windows8 (32/64bit)driverfree.
 Windows7(32/64bit), Windows XP(32/64bit) need driver.
 Note: Do not support Windows Vista
 Get latest driver visit www.linkstek.com or get support at support@linkstek.com

3

Analytical Note:

- Can find "Qualcomm Atheros ARXXXXXX Wireless Network Adapter" means Works Correctly no need to install driver anymore. Can connect to internet directly as you wish.
- Can't find "Qualcomm Atheros ARXXXXXX Wireless Network Adapter", but can find "Qualcomm Atheros ARXXXXXX Wireless Network Adapter" under Other Device in Device Manager. Means your system maybe have been deleted few file from Windows original system .But Wi-Fi Adapter was placed correctly .Do not worry follow steps install the software. Device will work(Most Windows 7 like this).
- Can't find "Qualcomm Atheros ARXXXXXX Wireless Network Adapter", can't find "Qualcomm Atheros ARXXXXXX Wireless Network Adapter" under Other Device in Device Manager. Means you were not put the Wi-Fi card to PCI Express Slot correctly. Need to re-plug Wi-Fi adapter or change it to another PCI Express slot and check again.

PCIE-N600 Software Installation

Note: Most of Windows 10, 8,1,8 systems do not need any driver if equipped with Windows original system. If system is unable to read Wi-Fi adapter, please refer to the driver installation steps as below.

8

The software for each system are using same operating panel, but build in different driver files.

Preparation:

- If computer have CD RAM, please go to open the Atheros file folder directly.
- If computer can't read CD please download from www.linkstek.com or get support at support@linkstek.com

Install the Software on Windows10, 8.1, 8, 7, XP (32/64bit):

Note: This driver installation steps works for Windows10, 8.1, 8, 7(32/64bit) systems.

Steps1. Follow steps and find correct software version on mini CD or Downloaded software pack:



9

Steps2. Double right-click the software and running the software.

- Double right-click



- Select language



10

- Waiting for preparation files ready.



- Click "Next"



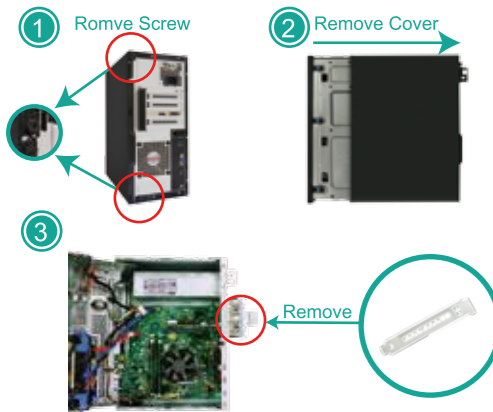
- Accept the license.



11

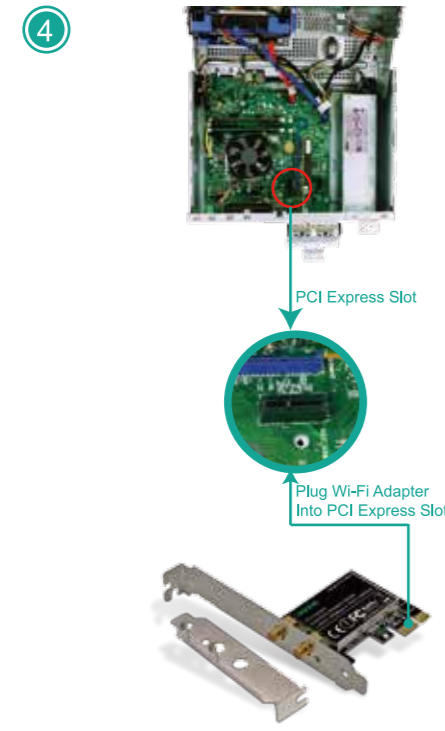
Assemble Wi-Fi Adapter to Desktop Computers:

Step1. Switch OFF, unplug your computer from the main socket, unplug the power cord and other connected peripheral devices. Remove the cover from computer's case.



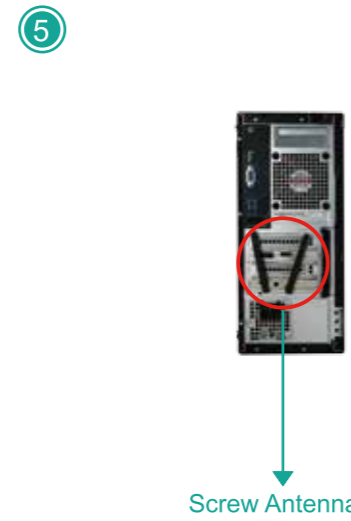
Step2. Find the correct PCI Express Slot ,Insert the wireless network card into an empty PCI-E slot of the motherboard.

4



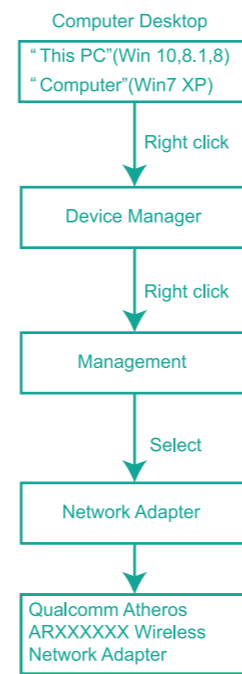
5

Step3. Screw in the antennas included directly to wireless network card. Note: If needed Position of the antennas can be adjusted to improve wireless reception. Reattach the cover of computer case, turn on computer.



6

Find the Wi-Fi adapter on computers, check if the Wi-Fi adapter assembled properly:



7

- Waiting for program installation



- Click "Finish", and using the new wireless network card.



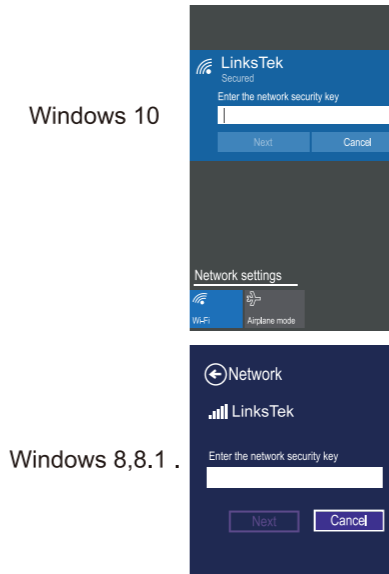
Step3. Connect to internet:

- Locate the task bar in the bottom right corner of your desktop.
- Select the Wireless icon as below on each system.

12



- Select the Wi-Fi signal, fill correct password and connect to it. Afterwards enjoy fast internet.



13

Windows 7



Trouble Shooting Analyze:

1. Assembled the adapter and completed software installation my computer can't find the any Wi-Fi signal, how can I fix it?

Step1. PCIE-N600 compatible with Windows10,8.1,8,7,XP system, check if your system on the list.

Step2. System on the list, but computer can't read any signal, please close the computer open the cover change the PCI Express slot to another or re-plug it .Ensure it is plugged correctly. Computer will find it soon.

2. Where I can get the latest software for my computer?

PCIE-N600 designed by Qualcomm Atheros solution and Assembled by Linkstek. Drivers and manuals are ready for download at www.linkstek.com or get contacts at support@linkstek.com

14

3. Why my PC get poor signal only? How to improve?

PCIE-N600 packed with 2X3 dBi antenna normally if PCs not too far away from APs it is enough for most of users online gaming or video streaming. But if you get a poor signal strength or speed please follow advice as below:

- Change the antenna directions and double check if antenna screwed correct or not.
- Test APs or Router's signal strength check if it is signal sending problem.
- PCs put too far away from routers, please consider to added a high power antenna on the card.

4. Why the signal always drop sometimes?

- The signals are from router ,so check if router works properly first , better restart the router wait few minutes and connect it again. Sometimes router was saved to much data ,need to restart and release the space.
- Check if the antenna was put correctly.
- Computer was put too far away from the router. Or signal from the router is unstable.

15