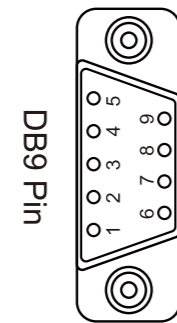
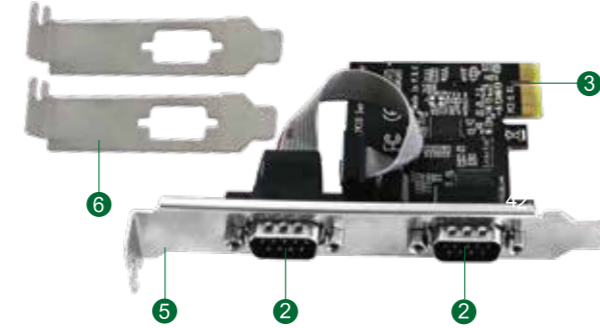


PCIE Serial & Parallel Port Cards

PCIE-SE2 PCIE-PA1

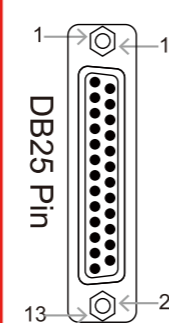
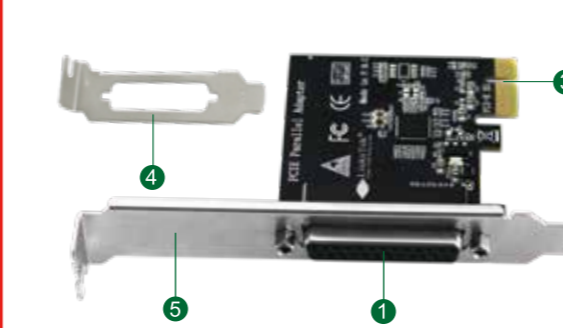
Site:www.linkstek.com Email:support@linkstek.com

PCIE-SE2 PCIE Dual Ports Serial Card



1	Data Carrier Detect
2	Received Data
3	Transmitted Data
4	Data Terminal Ready
5	Ground
6	Data Send Ready
7	Request to Send
8	Clear to Send
9	Ring Indicator

PCIE-PA1 PCIE Parallel/LPT Port Card



1	Strobe	10	Acknowledge	18	Ground
2	Data 0	11	Busy	19	Ground
3	Data 1	12	Paper Empty	20	Ground
4	Data 2	13	Select	21	Ground
5	Data 3	14	Auto Feed	22	Ground
6	Data 4	15	Error	23	Ground
7	Data 5	16	Initialize Printer	24	Ground
8	Data 6	17	Select in	25	Ground
9	Data 7				

- 1 DB25 Pin Parallel Port 2 DB9 Pin Serial Ports
- 3 PCIE X1 Interface 4 DB25 Low Profile Bracket
- 5 Full Height Bracket 6 DB9 Low Profile Bracket

PCIE-SE2 Product Description:

LinkTek PCIE-SE2 is a PCIE to dual ports RS232 serial expansion card. It is based on ASIX AX99100 solution. Allow users to add dual serial RS232 DB9 ports on desktop PCs, working stations or industrial equipment by PCIE X1 interface. Users can fully use the old device with Serial RS232 ports such as modem, cellular phone, PDA, ISDN terminal adapter, satellite receiver, graphic tablet, bar-code scanner, label printer, automated teller machine, GPS, finger print identification, Infra-Red transceiver, packet radio, magnetic card reader, POS devices, automation interface, card reader and more serial ports devices.

Compatible System:

Linux need to refer to compile source code in mini CD. Need to install driver on Windows XP, Vista, 7, 8.0, 8.1, 10, 11 (32/64bit) systems.

Package List:

- 1X PCIE-SE2, 1X User Manual, 2X Lowprofile Bracket
- 1X Mini-CD, 1X Mount Screw

PCIE-PA1 Product Description:

LinkTek PCIE-PA1 is a PCI Express X1 interface to 1-Ports DB25 LPT parallel card. It is based on ASIX AX99100 solution and compatible with most Windows OS and Linux systems. It is based on ASIX AX99100 PCIE to parallel host controller solution. Allow users to add 1-Parallel DB25/LPT port on desktop PCs, working stations or industrial devices by a single PCIE slot. Fully support IEEE 1284 protocol, Support ECP, EPP, SPP, Nibble, Byte mode, will work on most of parallel port peripheral devices such as printers, scanners, CD-R/RW drives, memory card readers, bar code scanners etc.

Compatible System:

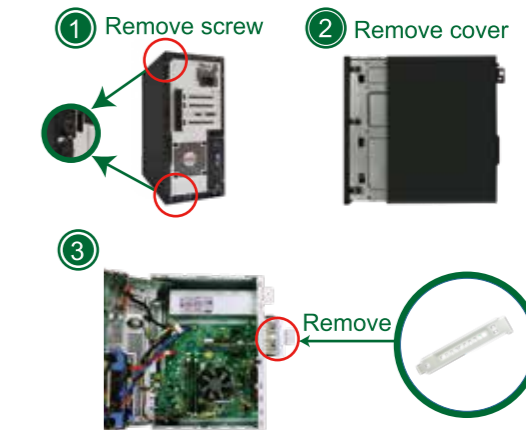
Linux need to refer to compile source code in mini CD. Need to install driver on Windows XP, Vista, 7, 8.0, 8.1, 10, 11 (32/64bit) systems.

Package List:

- 1X PCIE-PA1, 1X User Manual, 1X Low Profile Bracket
- 1X Mount Screw

Add Network Card on Desktop PCs:

Step 1, Switch OFF PC, unplug computer from main socket, unplug power cord and other connected peripherals. Remove the cover from computer case.



Step 2, Find correct PCI Express slot from motherboard, insert PCIE Serial/Parallel card into an empty PCI-E slot.

Step 3, Reattach the computer cover, and put back removed peripherals, power on desktop computer.



Added on Serial/Parallel Ports

Check If Hardware Detected By PCs

After hardware installation is complete, please refer to steps as below to check whether the hardware is connected well.

1. Select "This PC" (Windows 11, 10, 8.1, 8) "Computer" (Windows Server, 7, Vista, XP).

2-A. Left click and select "Manage"-"Device Manager"-"Other Device"-"PCI Serial/Parallel"

Means PCIE Serial/Parallel device was connected well But need to install driver.

2-B. Left click and select "Manage"-"Device Manager"-"Other Device"-"Ports(COM&LPT)"-"Multifunction Device"

Means PCIE Serial/Parallel device was connected well But need to install driver.

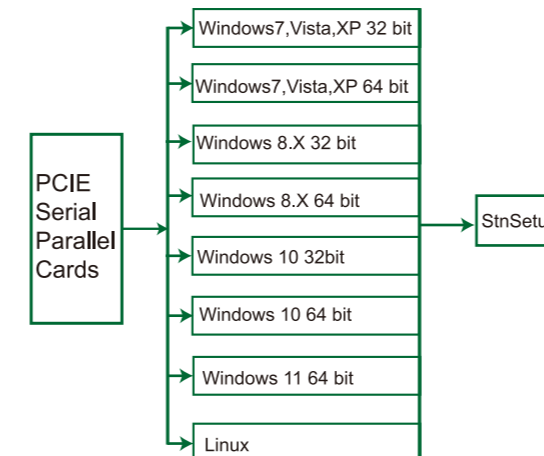
2-C. Left click and select "Manage"-"Device Manager"-"Other Device" no "PCI Serial/Parallel" and no "Ports (COM&LPT)"-"Multifunction Device"

Means users need to replug this card on PCIE slot or change to other PCIE slot. Cause the add-on card is not detected by PC.

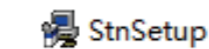
Install Driver on Desktop PCs

Model: PCIE-SE2, PCIE-PA1 share the same driver and the same driver installation panel on systems Windows XP, Vista, 7, 8, X, 10, 11(32/64). The driver installation steps as below are for Windows XP, Vista, 7, 8, X, 10, 11(32/64) and Linux, please use Mini CD or Download installation steps from our official site www.linkstek.com

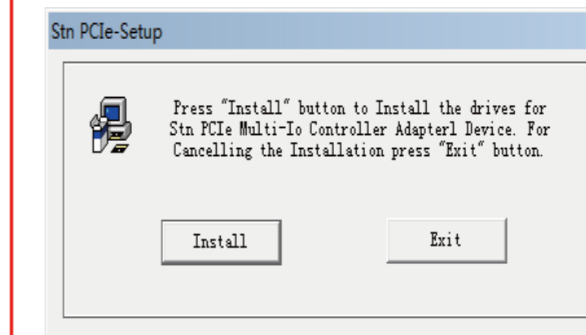
Step 1. Select correct driver for users system. NOTE: Driver files are in different file folders, before selecting driver, please confirm system version. For example, user using Windows 7 32 bit system selects file folder name "Windows 7, Vista, XP 32 bit"



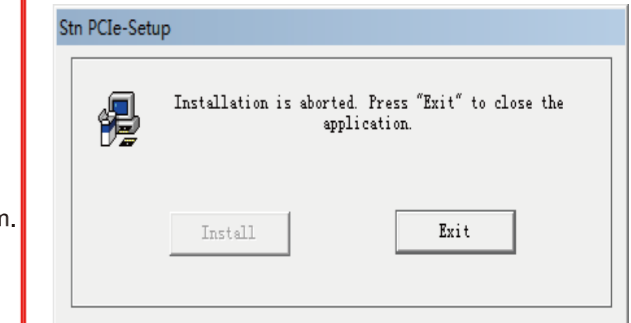
Step 2. Double-left click, start up driver installation guide.



Step 3. Left click "Install" to fill all related driver in system. Windows may take 1~2 minutes to install all related drivers on PC.



Step 4. After driver installation is done, click "Exit"



Step 5. Users will find the add on card in Windows device manager-Ports(COM&LPT)-PCIE to High Speed Serial Port(COM 2) or PCIE to Multi Mode Parallel Port (LPT1)

- > Network adapters
- > Ports (COM & LPT)
 - > PCIE to High Speed Serial Port (COM6)
 - > PCIE to High Speed Serial Port (COM7)
 - > PCIE to Multi Mode Parallel Port (LPT1)
- > Print queues
- > Processors



Works on PCIE X1, X2, X4, X8, X16 slot