

LinksTek

Easy Find Easy Link

4-Ports PCI Express to 1394A Card

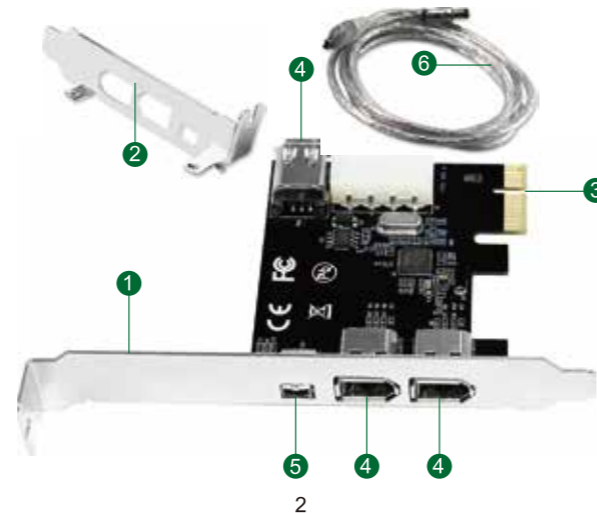
Model : PCIE-1394A

Site:www.linkstek.com Email:support@linkstek.com

1

Product Description:

PCIE-1394A is a Fire Wire 400 1394A card. It's based on PCIE 1.1 hardware interface. Provide 6 Pin 1394A 3-Ports and 4 pin 1394A 1 ports for video, industrial camera and more 1394A devices data transfer. It is an classical option to add universal 1394A on Windows PCs, Windows Servers and more industrial devices. The connected devices will get 400Mbps max data speed.



2

- 1 Full Height Bracket
- 2 Low Profile Bracket
- 3 PCIE X1 Interface
- 4 6Pin 1394A Ports
- 5 4Pin 1394A Ports
- 6 1394A Cable

Technical Specifications:

Major Chipset: VT6315N
 Hardware Interface: PCIE 1.1
 1394A Standard: 1394 OHCI Rev. 1.1
 1394A Ports: 3X 6Pin ports 1X 4Pin ports
 Power Supply: Onboard power and external 4-Pin power
 Supported Device: External hard drives, DV camcorder, digital cameras, CD-RW/DVD-ROM drive and other audio or video devices.

Warning:

1. If users light up heavy audio card by this 1394A card, the external 4Pin power must be connected with PSU.
2. Users need to install software for their 1394A device, for example the DV recorder will need software from the DV manufacture.

System Requirements:

Plug and Play on Windows 98, ME, 2000, 2003, XP, Vista, 7, 8, 8.1, 10, 11 (32/64bit) and Windows Server 2003, 2003R2, 2008R2, 2012, 2012R2, 2016, 2019, 2022 (32/64bit) systems.

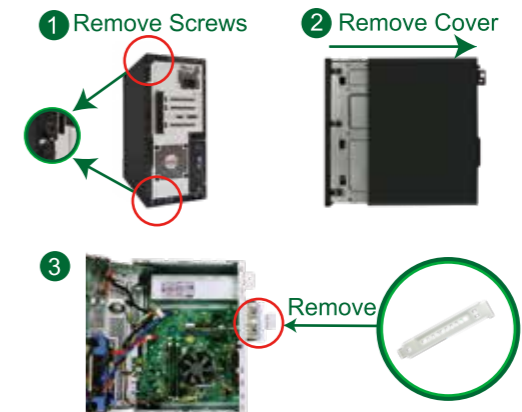
Package:

1X PCI-1394A, 1X User manual, 1X Mount screw
 1X Low profile bracket, 1X 6Pin to 4Pin cable

3

Install PCIE 1394A Card Hardware on PCs

Step 1. Switch OFF, unplug computer from main socket, unplug power-cord and other connected peripheral devices. Remove PC case cover.



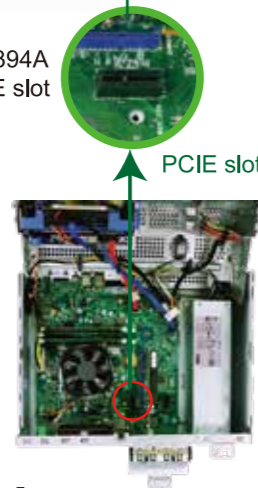
4

Step 2. Find correct PCI express slot, insert this PCIE 1394A card into an empty PCI-E slot on mother board.

4

Slim PCs need change to low profile bracket

Put PCIE 1394A card in PCIE slot



5

Step 3. Then reattach the PCs cover, put back all connected devices and turn on computer.

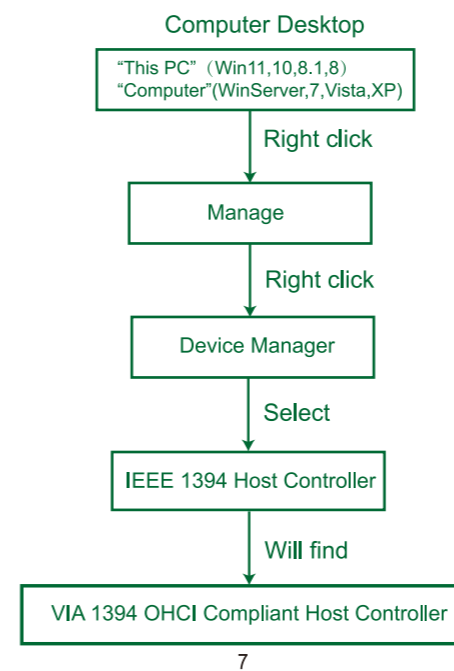
5



Added-on 1394A Ports

6

Step 4. System will load driver automatically. Users can find this device in Windows Device Manager, open "IEEE 1394 Host Controller" find "VIA 1394 OHCI Compliant Host Controller"



7

User FAQs:

Q:1. I have put the PCIE 1394A card in PCIE slot, but it does not communicate with my DV, why?

A: We suggest users contact your DV manufacture, they will provide the software.

Q:2. How to confirm if it communicates with PCs?

A: Users can open Windows Device Manager-open "IEEE 1394A Host Controller", will find "VIA 1394 OHCI Compliant Host Controller".

Q3: Is it compatible with PCIE 3.0 slot?

A: Yes, it will work on PCIE 1.0, 2.0, 3.0, 4.0 slot.

Q4: My Win10/11 can not read it, how to fix this?

A: It will work on Windows 11/10 and support plug and play. If it can not be found in Windows 10/11, we suggest users open this PCIE slot in BIOS or change this card in another PCIE slot.

Q5: Is this card need to install the 4-Pin power cable?

A: For normal use, no need to plug the 4Pin power. The 4Pin power is designed for some heavy audio cards.

Q6: Is it support slim PCs?

A: Yes, but user need change to low profile bracket which in the package by hand.

Q7: Where I can get the promptly tech support?

A: Contact us at support@linkstek.com or visit our site www.linkstek.com

8